

## Stabilize Your Spine



**"FacetFuse stability is stronger than two pedicle screws and equivalent to four pedicle screws"**  
*(Biomechanical Research)*

FacetFuse<sup>®</sup>

2 Screws

Incision Size

Pedicle Screws

4 Screws

## Outpatient Spine Surgery

**Posterior Transfacet Pedicular Stabilization  
for Instrumented Fusion (CPT 22840, 22612)**

FacetFuse can be inserted *percutaneously*  
through a less than 1 inch incision

REV A

# Spine Pain

## Symptoms

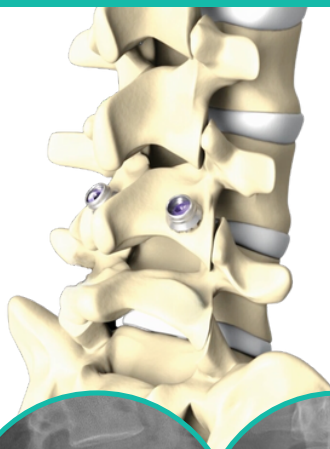
- Back, buttock or leg pain
- Difficulty walking
- Numbness in your legs, calves, or buttocks
- Weakness and / or loss of balance

## Potential causes

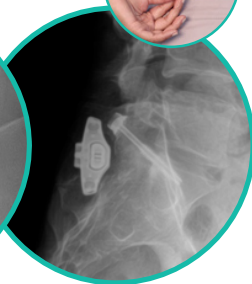
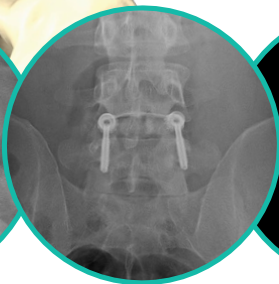
- Degenerative disc
- Painful facet joints
- Spinal stenosis
- Spondylolisthesis
- Scoliosis
- Spinal Fractures
- Failed prior fusion

## Surgery Candidates

- Pain longer than 6 months
- X-Ray & CT/MRI imaging
- Failed non-surgical treatment such as medication, therapy, activity modification and injections (epidural & facet blocks)



*Less tissue disruption*  
*Less screws*  
*Less operative time*  
*Less blood loss*  
*Less Incision size*



## Post-Op Information

- Follow up with your doctor
- Keep incision dry for 7-10 days
- Antibiotics for 5-7 days
- Pain medications as prescribed
- Walk as tolerated
- No lifting above 10 lbs
- Physical therapy
- NO smoking



Made in USA

**FacetFuse**<sup>®</sup>  
TransFacet Pedicle Screw

**CPT Code 22840, 22612**



Not every patient will qualify for FacetFuse or have the best results



REV A